

# PanTrack Reporter



## User Manual

# C

## Table Of Contents

	<u>Page</u>
<b>Software Installation</b>	<b>1</b>
<b>Technical &amp; Customer Support</b>	<b>1</b>
<b>1.0 PanTrack FMS</b>	<b>2</b>
1.1 Setting Up Your System	3
1.2 Setting Up Your Vehicle	3
1.3 Adding a Vehicle	4
1.4 Editing/Deleting a Vehicle	5
1.5 Tracking a Vehicle In Real Time	5
1.6 Viewing Vehicle Details	6
1.7 Zooming To A Vehicle	6
1.8 Disconnecting From a Vehicle	6
1.9 Mapping Features	7
1.10 Personalising The Map	7
1.11 Post Code Locator	7
<b>2.0 PanTrack Reporter</b>	<b>8</b>
2.1 Vehicle Data	8
2.2 Manual Log Download	8
2.3 Overnight Download	9
2.4 Creating a Data Report	9
2.5 Saving a Report	10
2.6 Reviewing a Saved Report	10
2.7 History Recording - Journey Replay	11



## Installation & Support

### System Requirements

Windows 95/98, NT, ME Operating System  
Processor minimum 166 Mhz (Recommended 300 Mhz)  
32 Mb of RAM (Recommended 64 Mb), 56k Modem  
CD-ROM Drive  
300 Mb of available disk space for Operating Program with UK Mapping Software  
2GB of available disk space for Operating Program with European Mapping Software

### Software Installation

Insert Software CD into CD-ROM Drive.  
PanTrack Guardian & Reporter will Auto Run.  
Follow **Installation Wizard** to load Software.  
If CD fails to Auto Run. From Start Menu - Select Run and type <x> :/SETUP.EXE > OK  
<x> represents the drive letter for your CD-ROM drive.

### Technical & Customer Support

#### **Technical Support**

We encourage you to visit our website [www.pantrack.com](http://www.pantrack.com) as a valuable resource for answers to technical support issues. The website offers answers to frequently asked questions, updates to PanTrack software and access to Technical Support via support forms.

Contact Technical Support on 01132 444 948 / [support@PanTrack.com](mailto:support@PanTrack.com)

#### **Customer Support**

For information on product information access our website or contact Geo Industries Limited Central Operations.

**Pantrack** International Limited  
Central Operations  
91, Roseville Road  
Leeds, LS8 5DT

Telephone: 0113 2444 948  
Fax: 0113 2444 962  
[support@PanTrack.com](mailto:support@PanTrack.com)

# 1

## PanTrack Reporter

### Mouse Buttons

The **PanTrack** program icon will have appeared on your desktop. (*PanTrack Reporter will display two icons - PanTrack Reporter and Report Viewer - See Section 2.0*).

To start the **PanTrack** program double click on the program icon.

Click (ing) = a single click of the LEFT mouse button.  
Double click = TWO consecutive clicks of the LEFT mouse button.  
Right click = a single click of the RIGHT mouse button

### PanTrack Software Screen

The main screen of the PanTrack operating program is presented in an array of mini-screens or 'panels', similar to the 'tiles' in the standard Windows format. Like Windows tiles, PanTrack program panels can be rearranged anywhere on the screen.

### To Move Panels

Place mouse cursor inside the top title bar (coloured in blue) then Click and HOLD the mouse button. Continue to hold the button and movement of the mouse will effect the movement of the panel on the screen - this is known as 'dragging'. Releasing the mouse button fixes the panel in the new position. The Map and vehicles panel can be resized - Place mouse Cursor at the bottom right hand corner of the panel. When mouse cursor becomes a directional arrow, click and hold the mouse panel and move to effect panel size.

### Main Navigation Bar

The blue bar at the bottom of the screen is the Main Navigation Bar and contains the main icon buttons required to setup and begin operating the PanTrack software.

**Main Map** opens and places main map on the screen.

**Vehicles** opens and places the list of vehicles onto the screen.

**Settings** opens the settings panel for the input of operating information. (See Section 1.1)

**Exit** offers a choice option to close the PanTrack program.

**To Minimise the Program** place mouse cursor anywhere in the blue unmarked area of the Main Navigation Bar followed by a right click.



## PanTrack Reporter

### 1.1 Setting Up Your System

Click **>Settings<** on the Main Navigation bar to reveal Settings panel. (See Fig 1-1)

Click **>General<** tab.

\* Click **Standard Modem** if using a desktop or laptop PC with a landline or mobile phone.

\* Click **GSM Modem** if using a GSM Modem supplied by Geo Industries Limited.

\* Click **Select Modem** and select the modem installed in the PC from the drop-down list.

**Note:** ISDN & ASDL systems, please contact Technical Support.

\* Select an **Atlas** from the drop down menu.

\* Enter **Fuel Costs** in boxes as appropriate.

Click **>Save<** to record settings. (the panel will then disappear)

**PanTrack Reporter Only - See Section 2.0**

Fig 1-1 Settings/General

### 1.2 Setting Up Your Vehicles

Click **>Settings<** on the Main Navigation bar to reveal Settings panel. (See Fig 1-1)

Click **>Vehicles<** tab to reveal Vehicles panel. (See Fig 1-2)

Click **>Add New<** to input details of vehicle.

Vehicle	Driver	Number	User SMS
TEST1	Andy Bendy	07753917490	1234
Haulage Enterprise	Brian Davies	07718626698	1243
Transport Union	Carlos Rodreous	07740064455	1245
Mercedes V230	Glen Mason	07764909456	4321
G.S.L.	Paul Henson	07753917492	2345
M.D.Transport	Ken Jolie	07764909366	9876
TEST2	Test	07764909783	2312
x277 lance	lance	566565	454
Renualt	Harj	07764909375	1234
fiat	mark	07764909432	7777

**PanTrack Reporter Only - See Section 2.0**

Fig 1-2 Settings/Vehicles

# 1

## PanTrack Reporter

### 1.3 Adding A Vehicle

Click on a **Vehicle Icon**.

Click **>Add<** to enter details. The **>Settings<** panel re-appears.

Click **>Add New<** to input additional vehicles and repeat the above process.

Click **>Save<** to record details - the screen will then disappear.

**Unit Number** is the vehicle dial up number. (See Your Installation Record)

**User SMS** is the mobile telephone contact number for remote message/monitoring.

**Note:** If the telephone system requires a number pre-fix to obtain an outside line, this number must be typed before the Unit number.

**Has Data Logging** - *PanTrack Reporter Only*  
See Section 2.0.

**Has Geo-Fence Option** click if vehicle is upgraded with Geo-Fencing.

**Enable Voice Call Back from SMS Server** click if vehicle is upgraded for Mobile Phone Integration.

**Fuel Details** click fuel type then enter average MPG Figure.

**Time Details** set to differentiate between Business and Private mileage. (*Designed for PanTrack Reporter*) Click to highlight the relevant time segment - adjust digits using [ up / down] arrow box.

The screenshot shows the 'Add New' dialog box with the following fields and options:

- Vehicle Name: [Text Input]
- Unit Number: [Text Input]
- Unit SMS: [Text Input]
- Driver: [Text Input]
- Unit is data logging enabled
- Unit is Geo-Fence enabled
- Enable SMS position update
- Fuel Details**
  - Petrol
  - Diesel
  - LRP
  - Custom
  - Average MPG: 30 [Spinner]
- Time Details**
  - Working day starts at: 09:00:00 [Time Picker]
  - Working day ends at: 17:00:00 [Time Picker]
- Icon**
  - [Truck Icon]
  - [Van Icon]
  - [Car Icon]
  - [Motorcycle Icon]
  - [Boat Icon]
- [Add] [Cancel]

Fig 1-3 Settings/Vehicles/Add New

## PanTrack Reporter

### 1.4 Editing / Deleting A Vehicle

Click **>Settings<** on the Main Navigation bar to reveal settings panel.

Click **>Vehicles<** tab to reveal Vehicles panel.

Place mouse cursor at the vehicle name in the vehicle column then click to highlight the name.

Click **>Edit<** or **>Delete<** as required and make necessary changes. Click **>Save<** to record changes.

### 1.5 Tracking A Vehicle In Real Time

Click **>Vehicles<** on the Main Navigation bar to reveal vehicles panel (See Fig 1-4). The panel will list vehicle icon(s) as previously entered in **>Add New<** panel (See Fig 1-3).

Select a vehicle for tracking by clicking on the appropriate icon.

**[a]** Double click to begin dial-up process OR...

**[b]** Right click on vehicle icon to activate mini menu - click **Connect** option. (See Fig 1-5)

\* Confirmation of real time operation is shown by the appearance of a modem icon in the lower right hand corner of the Main Navigation bar.

\* The icon of a previously tracked vehicle will remain static in its last recorded location on the map. **NB:** Connection can be made to previously tracked vehicles by placing the mouse cursor on the vehicle within the map and single clicking. A menu will appear allowing you to select **Connect**. This method can also be used to **Zoom to** the selected vehicle.

\* Size of icons in the Vehicles panel may be altered for convenience by placing the mouse cursor in the blue area of the title bar and right clicking to activate a pop up menu.

You are now using **PanTrack** to track your vehicle in real time.



Fig 1-4 Vehicles Panel  
Fig 1-5 Vehicles Panel/Mini Menu

# 1

## PanTrack Reporter

### 1.6 Viewing Vehicle Details

Vehicle details are activated from within the **Vehicles** Panel.

Click **>Vehicles<** tab to reveal Vehicles panel. Right click on vehicle icon to activate mini menu.

Click **Details** option. (See Fig 1-5) Vehicle details and Speedometer appears in **Vehicle Info** panel. (See Fig 1-6)



Fig 1-6 Vehicle Info

### 1.7 Zooming To A Vehicle

In the **Vehicles** panel click the '**Keep selected vehicle in view**' box followed by a right click on the relevant vehicle icon to activate mini menu - click **Zoom To** option. (See Fig 1-7)

#### Setting Zoom Level

[a] The scale control is located at the bottom left hand corner of the Main Map. Use the mouse cursor to **drag** the slider bar to select required scale. Or....

[b] On the map, click and HOLD the mouse button to **drag 'n'** **draw** the amber/black border around the area which contains vehicle icon - releasing the mouse button re-defines the zoom level.



Fig 1-7 Vehicles Panel

### 1.8 Disconnecting From A Vehicle

[a] Right click the modem icon on the bottom right of the Main Navigation bar the click **Disconnect** option. (See Fig 1-8) OR..

[b] Right click your vehicle icon in the **Vehicles** panel, then click **Disconnect** option. (See Fig 1-7)



Fig 1-8 Modem/Sub Menu

## PanTrack Reporter

### 1.9 Mapping Features

A useful feature provided in the mapping program is the depiction of locations and various places of interest.

Place the mouse cursor on one of the marked locations then *double click* to reveal a full **Location Details** panel. (See Fig 1-9)

To obtain details of a specific map area or where a vehicle is located, place the mouse cursor on the target area and right click to reveal the mini menu. (See Fig 1-10)

The mini menu will detail **location and County**, and allow you to reveal an **OS Grid Reference**.

Fig 1-9 Location Details

### 1.10 Personalising The Map

You can personalise the map program by adding details of your own - right click at the position on the map to reveal the mini menu. (See Fig 1-10)

The **Add Location** panel provides a >Name< field to enter you own label along with three identifier icons comprising a house, a factory and an office building. (See Fig 1-11)

Fig 1-10 Location/Mini Menu

### 1.11 Post Code Locator

To locate a postcode - place the mouse cursor anywhere on the map and right click to reveal the mini menu. (See Fig 1-10)

The **Find Post Code** panel allows you to enter a post code. Click **>OK<**. The map will then Zoom to the selected post code area. (See Fig 1-12)

Fig 1-11 Add Location

Fig 1-12 Post Code Locator

# 2

## PanTrack Reporter

### PanTrack Reporter Users

**PanTrack Reporter** users are advised to read previous sections of this manual to complete their knowledge of the operating program.

The **PanTrack Reporter** systems carries the following additional features as standard:-

**History Recording** - Allows previous downloaded journey activity to be replayed on screen.

**Data Reports** - Provides vehicle activity logs in simple listed format for viewing on screen, ready for printing or archiving to disk.

### 2.1 Vehicle Data

It is essential that vehicle data is downloaded to the PC console in order to produce **History** and **Data** Reports.

### 2.2 Manual Log Download

Click **>Log Download<** on the Main Navigation bar to open the Settings panel. (See Fig 2-1)

Click **>Data Logging<** tab

Select vehicles for data downloading by clicking the appropriate boxes.

Click **>Download<** to connect with the vehicle(s) and begin downloading the data (See Figs 2-2 and 2-3)

Click **>Save<**. After completion of data download, the program disconnects the telephone link and activates the **Saving Journey to Log Please Wait..** panel.

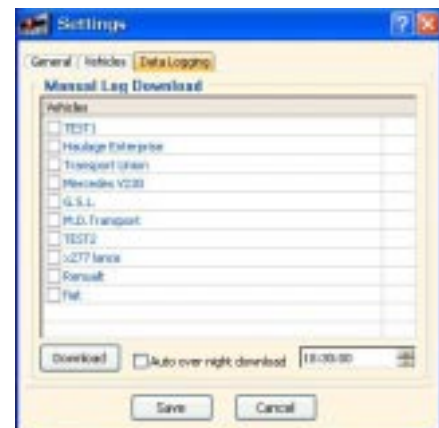


Fig 2-1 Settings/Data Logging



Fig 2-3 Downloading Log



Fig 2-2 Connecting

## PanTrack Reporter

### 2.3 Overnight Download

Click **>Log Download<** on the Main Navigation bar to open the Settings panel. (See Fig 2-4)  
Click **>Data Logging<** tab

Select vehicles for **Auto Overnight Download** by clicking the appropriate boxes.

To set **download** time, move mouse cursor onto time segment and click to highlight. Use the up and down arrows to adjust segment. Repeat procedure for each time segment. [ Hours, Minutes and Seconds]

**Note: The PanTrack Reporter program needs to be open (can be minimised) for the overnight download function.**

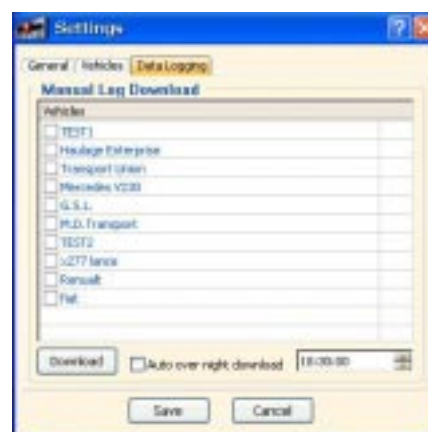


Fig 2-4 Settings/Data Logging

### 2.4 Creating A Data Report

With the essential vehicle data downloaded to the PC, a data report can now be created.

Click **>Report<** on the Main Navigation bar to open the Report panel. (See Fig 2-5)

In **Journey Type**, select the desired report style:-

[a] **Journey Report** - List full Journey Details; Date, Time, Location, Speed & Fuel Costs.

[b] **Speeding Report** - Lists times spent speeding. All speeding activity over preset speeds on road classification. Eg: Motorway 70mph etc..

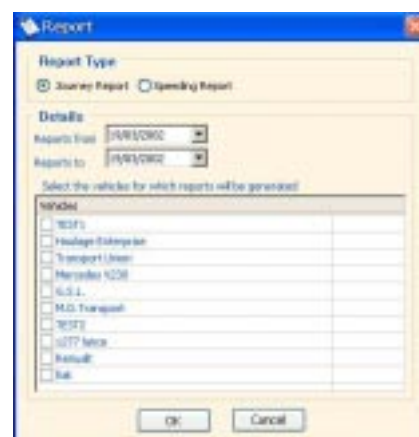


Fig 2-5 Report

# 2

## PanTrack Reporter

In **Details**, enter the time frame for the report and tick box(es) to select vehicle(s). Click **>OK<**

A complete **Print Preview** will appear in full screen size. To Print a copy of this Report, click on the **Printer Icon** located on the top tool bar. (See Fig 2-6)

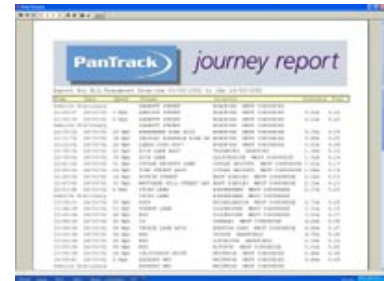


Fig 2-6 Print Preview

## 2.5 Saving A Data Report

Click on the **Disk Icon** on the tool bar of the **Print Preview** screen to activate Save Report panel. (See Fig 2-7)

Select a folder on your hard disk, or use a floppy disk or CD ROM.

Type in a filename and click **>Save<**

The Report will be stored as a **QRP** file with a **\*.QRP** extension.



Fig 2-7 Save Report

## 2.6 Reviewing A Saved Data Report

Accessing a Saved Report on file is done via your Windows Desktop program.

Click the **PanTrack Report Viewer** (the second chequered icon next to the Sci-Track program icon) - A blank version of the **Print Preview** screen will appear.

Click the **Folder icon** on the tool bar - the **Load Report** panel will appear (See Fig 2-8)

Select the folder containing your \*.QRP report files - click **>Open<** The report will be restored to the screen. (See Fig 2-6)



Fig 2-8 Load Report

## PanTrack Reporter

### 2.7 History Recording - Journey Replay

The Data Download process (see previous section) also enables the PanTrack program to replay vehicle journey(s) in a similar manner to a video cassette recorder.

1. Click **>Vehicles<** on the main Navigation bar to reveal vehicles panel. Select vehicle icon, right click to activate mini menu - click **Zoom to** option.
2. On the map, the selected vehicle icon will be shown in a static position at the location point where it was last tracked.

Select **>History<** from the main Navigation bar to activate History panel. The **Control panel** is similar to that of a domestic audio/video cassette player. (See Fig 2-9)



#### Replay Set up

**Date** - adjusted by clicking the arrow box to reveal Calendar panel. Select **Month** by clicking arrows [back/forward], and **Day** by clicking calendar number required. Calendar panel will then disappear and new date in Day/Month/Year format will be displayed in Date box.

**Time** - drag the pointer on the horizontal slider control using the click and HOLD method. Release mouse button to display new Hours/Minutes/Seconds in the Time box.

**Fine Tune Time** in the Time box - click to highlight the relevant time segment then adjust digits via the [up/down] arrow box.

**Speed** - adjust the replaying speed\* to save time when reviewing a journey. Click arrow box to activate mini menu - select a replay speed. ***\*This does not affect the actual speed readings of the recorded vehicle.***

#### Replaying a Journey

Use buttons on the panel in the same way as an Audio/Video cassette player. For instance: Click to start replaying the journey and click to stop replay.

Return to real time map instantly - Click **>Real Time<** on the Main Navigation bar. Vehicle icons will be shown in static positions at the location points where last tracked.